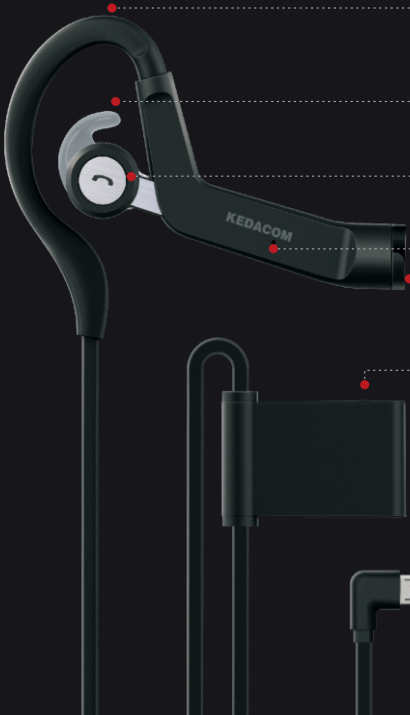


耳挂摄像机

Ear-Hook Camera-2X0



KEDACOM



人体工程学耳挂

可更换耳塞

通话按键

麦克风

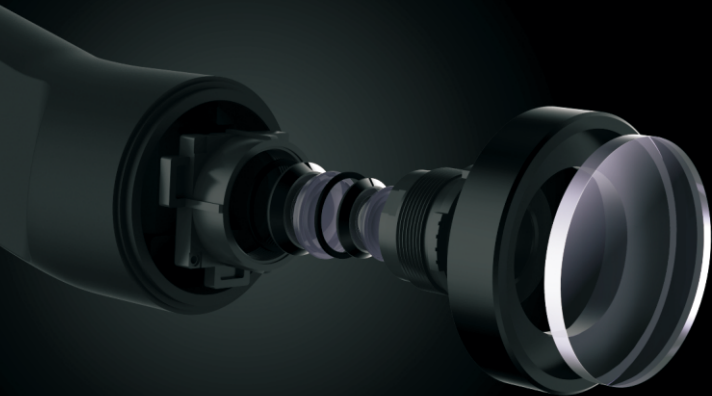
广角镜头

启用/禁用通话功能

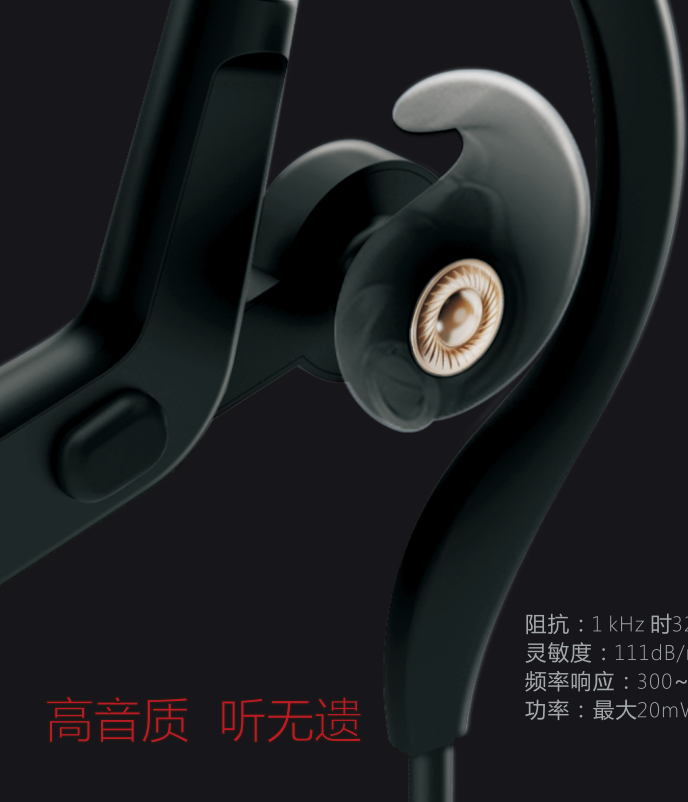
Micro USB/USB Type C 接口

* 整机IP54级防水
与皮肤接触部分均使用医用级环保材料

大广角 览无余



使用广角镜头，视野更宽广
景深：0.5m~无穷远
高清画面摄录，呈现更多细节



高音质 听无遗

阻抗：1 kHz 时 $32\ \Omega$
灵敏度：111dB/mW
频率响应：300~3400Hz
功率：最大20mW

小身材 轻如羽

身材小巧，耳挂采用环保级TPU弹性材料，灵活有弹性，能适应不同大小的耳廓，弧线型设计完全贴合耳部轮廓，分散耳部压力，长时间佩戴也无负担，佩戴稳固舒适



运动式耳塞

鲨鱼鳍耳塞采用环保材料，易于佩戴并可舒适、自然地贴合耳窝，令入耳式佩戴更稳固

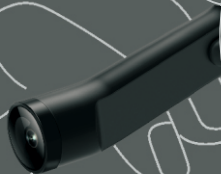


佩戴步骤



1

右手如图所示抓握摄像机



2

将耳塞部分放入耳窝

3

将耳挂绕至耳后，并调整至舒适位置



4

将线控夹固定在衣物上

5

将USB接口插入终端



镜头参数

Ear-Hook Camera-210/220模组参数：

| 模组参数 | | |
|-------------|--------|----------|
| 模组型号 | | S2VM14-A |
| 模组焦距 (mm) | | 5mm |
| 光圈 (D/f') | | 2.8 |
| 相面尺寸 (inch) | | 1/2.7" |
| 视场角 | 水平 | 68° |
| | 对角 | 84° |
| 尺寸 (mm) | | 9*9mm |
| 最佳聚焦距离 (m) | | 0.5m~∞ |
| 工作方式 | 光圈驱动方式 | 固定 (FIX) |

镜头参数

Ear-Hook Camera-230镜头参数：

| 镜头参数 | | |
|-------------|--|----------|
| 镜头型号 | 9803-3MAS-HTZ | |
| 镜头焦距 (mm) | 4.3mm | |
| 光圈 (D/f') | 2.0 | |
| 镜头接口 | M12*P0.5 | |
| 相面尺寸 (inch) | 1/2.7" | |
| 视场角 | 水平 | 74.5° |
| | 对角 | 88.1° |
| 尺寸 (mm) | $\Phi 9.4 (\pm 0.4) \times 12 (\pm 0.3)$ | |
| 最佳聚焦距离 (m) | 0.5m ~ ∞ | |
| 工作方式 | 光圈驱动方式 | 固定 (FIX) |

保修说明

本保修卡适用于您购买的本公司系列产品。

1. 免费保修期一年（仅限中国大陆地区，中国大陆以外地区请参考英文说明）。
2. 凡保修期内，由于本产品自身引起的故障，请与公司售后服务部联系。
3. 保修时我们将使用您的保修卡信息，请认真填写。
4. 以下情况，属于有偿保修范围：
 - 人为原因造成的设备故障
 - 因使用环境不符合本产品要求造成的故障
 - 因不可抗力造成的产品损坏
 - 无保修卡
 - 已过免费保修期

用户信息

用户名称：

详细地址：

传真：

电话：

邮箱：

邮编：

产品名称：

产品型号：

购买日期：





Ergonomic Ear-Hook

Replaceable Earplug

Phone Button

Mic

Wide-Angle Lens

Enable/Disable Phone

Micro USB/USB Type C Port

* The camera is IP54 rated
Skin-contacting part is made of medical
ecological material

Wide-Angle, Panoramic-View



Apply wide-angle lens, wider field of view
Depth of field: 0.5m ~ ∞
HD image recording, more detailed presentation



Impedance: 32 Ω at 1 kHz
Sensitivity: 111dB/mW
Frequency response: 300~3400Hz
Power: Max 20mW

High-Quality Audio, Exhaustively Heard

Small in Size, Featherlight in Weight

Small and exquisite, the ear-hook is made of ecological TPU material, flexible and elastic, fitting different auricles; the arc design fully fits the auricle, dispersing ear stress and maintaining stable and comfortable wearing for a long time.



Sporty Earplug

The shark-fin earplug is made of eco-friendly material for easy wearing and fits the auricular fossa cozily and naturally, making in-ear type more stable.

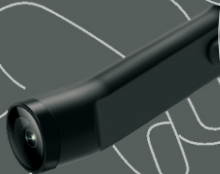


Wearing Steps



1

Hold the camera with your right hand as shown in the picture.



2

Put the earplug into the auricular fossa.

3

Roll the ear-hook round behind the ear and adjust it to a cozy position.



4

Fix the wire clip on the clothes.

5

Insert the USB port into the terminal device.



Lens Specification

Ear-Hook Camera-210/220 Module:

| Lens Specification | | |
|----------------------------|------------|-------------|
| Model | | S2VM14-A |
| Focal Length (mm) | | 5mm |
| Aperture (D/f') | | 2.8 |
| Image Sensor (inch) | | 1/2.7" |
| Field Angle | Horizontal | 68° |
| | Diagonal | 84° |
| Size (mm) | | 9*9mm |
| Optimal Focus Distance (m) | | 0.5m ~ ∞ |
| Mode | Iris | Fixed (FIX) |

Lens Specification

Ear-Hook Camera-230 Module:

| Lens Specification | | |
|----------------------------|------------------------|-------------|
| Model | 9803-3MAS-HTZ | |
| Focal Length (mm) | 4.3mm | |
| Aperture (D/f') | 2.0 | |
| Lens Mount | M12*P0.5 | |
| Image Sensor (inch) | 1/2.7" | |
| Field Angle | Horizontal | 74.5° |
| | Diagonal | 88.1° |
| Size (mm) | Φ9.4 (±0.4) x12 (±0.3) | |
| Optimal Focus Distance (m) | 0.5m ~ ∞ | |
| Mode | Iris | Fixed (FIX) |

Kedacom Two (2) Year Limited Hardware Warranty

WHAT IS COVERED BY THIS WARRANTY?

Kedacom warrants the Kedacom-branded hardware product and accessories contained in the original packaging (hereinafter referred to as "Kedacom Product") against defects in materials and workmanship when used normally in accordance with Kedacom's published guidelines for a period of TWO (2) YEARS from the date of original retail purchase in areas other than mainland China by the end-user purchaser (hereinafter referred to as "Warranty Period"). For the Kedacom Product purchased in mainland China, see the simplified Chinese version of this warranty for details. Kedacom's published guidelines include but are not limited to information contained in technical specifications, user guides, and service communications. The preceding applies unless otherwise agreed in the contract.

WHAT IS NOT COVERED BY THIS WARRANTY?

This warranty does not apply to any non-Kedacom branded hardware products or any software, even if packaged or sold with Kedacom hardware. Manufacturers, suppliers, or publishers, other than Kedacom, may provide their own warranties to you but Kedacom, in so far as permitted by law, provides their products "AS IS". Software distributed by Kedacom with or without the Kedacom brand (including, but not limited to system software) is not covered by this warranty. Please refer to the licensing agreement accompanying the software for details of your rights with respect to its use. Kedacom does not warrant that the operation of the Kedacom Product will be uninterrupted or error-free. Kedacom is not responsible for damage arising from failures to follow instructions relating to the Kedacom Product's use.

This warranty does not apply: (a) to consumable parts, such as batteries, unless failure has occurred due to a defect in materials or workmanship; (b) to cosmetic damage, including but not limited to scratches, dents, and broken plastic on ports; (c) to damage caused by use with another product; (d) to damage caused by acts outside the control of Kedacom, including without limitation acts of God, accidents, abuse, misuse, fire, storms, earthquakes, flood, or other external cause; (e) to damage caused by exposure of the product to heat, bright light, sun, liquids, sand, or other contaminants; (f) to damage caused by operating the Kedacom Product outside Kedacom's published guidelines; (g) to damage caused by service (including upgrades and expansions) performed by anyone other than a representative of Kedacom, Kedacom employee, or authorized Kedacom agent; (h) to an Kedacom Product that has been modified to alter functionality or capability without the written permission of Kedacom; (i) to defects caused by normal wear and tear or otherwise due to the normal aging of the Kedacom Product, or (j) if any serial number has been removed or defaced from the Kedacom Product.

YOUR RESPONSIBILITIES

If your Kedacom product is capable of storing data and other information, you should make periodic backup copies of the information contained on the storage media to protect the contents and as a precaution against possible operational failures.

Before receiving warranty service, Kedacom or its authorized agents may require that you furnish proof of purchase details, respond to questions designed to assist with diagnosing potential issues, and follow Kedacom's procedures for obtaining warranty service. Before submitting your Kedacom Product for warranty service, you should maintain a separate backup copy of the contents of its storage media, remove all personal information that you want to protect, and disable all security passwords.

During warranty service, it is possible that the contents of the Kedacom product's storage media will be lost, replaced or reformatted. In such an event, Kedacom and its authorized agents are not responsible for any loss of data or other information contained on the storage media or any other part of the Kedacom product serviced.

Following warranty service, your Kedacom Product or a replacement product will be returned to you as your Kedacom Product was configured when originally purchased, subject to applicable updates. You will be responsible for reinstalling all other data and information. Recovery and reinstallation of other data and information are not covered under this warranty.

WHAT WILL KEDACOM DO IF THE WARRANTY IS BREACHED?

If during the Warranty Period, you submit a valid claim to Kedacom or an authorized Kedacom agent, Kedacom will, at its option, (i) repair the Kedacom Product using new or previously used parts that are equivalent to new in performance and reliability, or (ii) exchange the Kedacom Product for a refund of your purchase price.

A Kedacom replacement part or product, including a user-installable Kedacom part that has been installed in accordance with instructions provided by Kedacom, assumes the remaining warranty of the Kedacom Product or ninety (90) days from the date of replacement or repair, whichever provides longer coverage for you. When a product or part is replaced or a refund provided, any replacement item becomes your property and the replaced or refunded item becomes Kedacom's property.

Kedacom reserves the right to refund the purchase price as its exclusive warranty remedy.

HOW TO OBTAIN WARRANTY SERVICE?

To seek warranty service, please contact a local authorized Kedacom agent. When contacting the agent via telephone, other charges may apply depending on your location.

User Information

Complete the form below and keep for ready reference.

| | |
|-------------------|----------------|
| User Name: | |
| Address: | Postal Code: |
| Tel: | Mobile: |
| Fax: | E-Mail: |
| Product Name: | Product Model: |
| Date of Purchase: | |

KEDACOM

苏州科达科技股份有限公司

Suzhou Keda Technology Co.,Ltd.

中国：江苏省苏州市高新区金山路131号(215011)

Tel: +86-512-68418188 Fax: 86-512-68412699

Suzhou Keda Technology Co.,Ltd.

Singapore: 627A Aljunied Road, #09-07, BizTech Centre, Singapore 389842

Tel: +65-6842-5700 Fax: +65-6842-5900